

User Guide

Bluetooth Wireless Presentation Solution for Handheld and Smartphone Devices

Model Number: PS6B1V

Pitch *Duo*[™] is a complete presentation solution for handhelds and smartphones running Palm OS version 4.0 and later, Pocket PC 2002, or a Nokia 60 series phone and able to connect via Bluetooth or USB.

The solution includes:

- Pitch *Duo*[™]
- A power supply for powering Pitch *Duo* and charging the device's batteries when connected to the Pitch *Duo* via a sync/charge cable
- CD-ROM containing software and drivers for using the Pitch *Duo*
- International mechanical plug adapters (-I model only)

iGo[™]
mobility products[™]

Table of Contents

Introduction

About iGo Pitch <i>Duo</i>	1
Minimum Requirements	3
Product Registration	3

Chapter 1

Preparing to Use Pitch <i>Duo</i>	4
Installation of Software	4
Connecting Pitch <i>Duo</i> to a Display	5

Chapter 2

Using Remote Display	6
--------------------------------	---

Chapter 3

Giving Presentations	8
Loading Presentations to the Handheld Device	9

Chapter 4

Important Notes	11
---------------------------	----

Chapter 5

Using the Options Menu	12
Hide/Unhide Slides	12
Reorder/Restore Slides	13
IR Mode	13
Auto-Run Presentation	14
Presentations on the SD Card	15

Chapter 6

Setting up Bluetooth Connections	16
--	----

Regulatory Information 19

Technical Support 21



Minimum Requirements

The following minimum requirements must be met for the handheld device and desktop computer:

- A handheld or smartphone capable of connecting via Bluetooth or USB and running Palm Operating System 4.0 or later, Pocket PC 2002 or a Nokia 60 series phone
- The AC power adapter for Pitch *Duo*
- The Pitch *Duo*
- Pitch CD-ROM
- An external display device such as a monitor or projector that supports VGA connectivity
- sVGA cable
- Bluetooth connectivity from the handheld device or USB sync or sync/charging cable for the handheld device
- Computer running Windows 98/ME/2000/XP/NT4 with the handheld device's synchronization application installed and a CD-ROM drive

Please Register Now

Thank you for purchasing the iGo Pitch *Duo*. We strongly encourage you to register this product so that we may keep you notified of pertinent updates and relevant product information. Free technical support is provided to registered users for the first 90 (ninety) days from purchase date.

Registration may be completed online at: www.igo.com/registration



Chapter 1

Preparing to Use Pitch Duo

Installing the Software

- 1 Insert the application CD into your PC's CD-ROM drive or download the software programs from the iGo web site at <http://igo.com/help/CustomerSupport.asp>.
- 2 A menu should automatically launch. If not, find the file *autorun.exe* on the CD and open it.

- **Palm users**

Select the appropriate menu options to install either iPresent or Quickpoint, part of Quickoffice Pro. Both iPresent and Quickpoint have a desktop application and a Palm application that together enable you to sync, view, download and present PowerPoint presentations. You can install and use both if you desire. Palm users should also install iDisplay, a Palm application, to use the remote display functionality of the Pitch device.

- **Pocket PC users**

Select the appropriate menu option to install iPresent. iPresent contains a desktop and Pocket PC application that together enable you to sync, view, download and present PowerPoint presentations. iPresent also includes the functionality to show the live display of your device on an external display by using the "Start Remote Display" option from the "File" menu.

- **Nokia users**

Select the appropriate menu option to install Quickpoint for Symbian. Quickpoint contains a desktop and phone application that together enable you to sync, view, download and present PowerPoint presentations using your Nokia phone.

- 3 Once the installation is complete your desktop has the appropriate programs installed to enable conversion of PowerPoint files for use on your handheld device.
- 4 Connect the handheld or smartphone to the PC in the usual manner for synchronization via Bluetooth, infrared, cradle or cable and initiate a synchronization to complete installation to the handheld device.

Connecting Pitch Duo to a Display

At the venue for your presentation, do the following:

- 1 Plug the power adapter into an outlet and then connect it to the power jack on the side of the Pitch Duo unit.
- 2 *Optional* - Connect a PS/2 or USB mouse and/or keyboard to the appropriate ports on the Pitch Duo. When using the remote display application on the handheld, the mouse can be used as an on screen pointer and navigation tool while the keyboard can be used for text input.
- 3 Connect the Bluetooth adapter to one of the USB ports on the iGo Pitch Duo unit. If not using Bluetooth to connect, attach the smartphone or handheld to the Pitch Duo via a USB sync or sync/charging cable provided by the manufacturer or purchased separately.
- 4 Connect your LCD projector, display unit, monitor or plasma screen via an sVGA cable connector to the VGA port on the back of the Pitch Duo unit.
- 5 Turn on the monitor, projector, or display unit.
- 6 Turn on the handheld device and from the Programs Menu on the device open the iPresent or Quickpoint application for a presentation, or for remote display on a Palm device, open the iDisplay application.

Chapter 2

Using Remote Display

The iDisplay handheld application on Palm or the iPresent application on Pocket PC allows the user to display the handheld device's live screen image to an external display. Remote display is currently not available for Nokia phones. Follow the steps below to use remote display on Palm and Pocket PC devices:

NOTE: This functionality is best used over a USB connection with the Pitch Duo, but can be used over a Bluetooth connection.


Palm Users:

- Make sure the Pitch *Duo* unit is connected as described in the last section of Chapter 1.
- From the main menu on the handheld device, tap on the **iDisplay** icon.
- Tap "Refresh" if the Pitch *Duo* unit has not been recognized by the handheld.
- To connect via Bluetooth, display the 'Options' menu and select "Bluetooth...", then check the box next to "Connect via Bluetooth." See Chapter 6 for detailed instructions on setting up Bluetooth connectivity.
- Once iDisplay is loaded, click on the "Start" button.
- Use the Palm-powered device as desired. The current screen image from the Palm-powered device will automatically be routed to the external display.
- To discontinue using remote display functionality, return to the iDisplay application and tap the "Stop" button.



- An external PS/2 or USB keyboard and/or mouse connected to the Pitch *Duo* can be used with the Palm-powered device while running iDisplay.

Pocket PC Users:

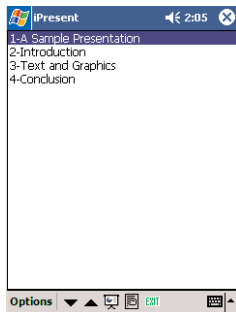
- Make sure the Pitch *Duo* unit is connected as described in the last section of Chapter 1.
- From the Programs menu on the handheld device, open the iPresent application.
- To connect via Bluetooth, display the 'File' menu and select "Bluetooth...", then check the box next to "Connect via Bluetooth." See Chapter 6 for detailed instructions on setting up Bluetooth connectivity.
- Tap on the screen icon  at the bottom of the handheld display or tap on "File" to reveal the menu, then tap on "Start Remote Display."
- Use the Pocket PC device as desired. The current screen image from the Pocket PC device will automatically be routed to the external display.
- To end the remote display, tap on the screen icon at the bottom of the iPresent screen, or tap on "File" to reveal the menu, then tap on "Stop Remote Display."
- An external PS/2 or USB keyboard and/or mouse connected to the Pitch *Duo* can be used with the handheld device while running remote display.

Chapter 3


Giving Presentations

The iPresent software allows the user to display PowerPoint presentations from the handheld device to an external display. Palm users may instead use Quickpoint, part of the Quickoffice Pro suite, to give presentations using Pitch Duo. Nokia users must use Quickpoint for Symbian to give presentations. For details on using Quickpoint, please see the Quickpoint user guides included on the CD-ROM or downloaded from www.quickoffice.com.

- 1 Once Pitch Duo is connected to a display (Chapter 1), turn on the handheld device and select the application “iPresent” to open the iPresent main menu. A list of all loaded PowerPoint presentations will be displayed. See the next section in this chapter for instructions on loading PowerPoint presentations to the handheld device.
- 2 When connecting to Pitch Duo via Bluetooth, display the “File” or “Options” menu and select “Bluetooth...”. Check the box beside “Connect with Bluetooth” by tapping on it and then tap “OK.” See Chapter 6 for further details on setting up Bluetooth for specific devices.
- 3 Tap on the presentation you wish to show, then tap “Open” or the open folder icon.
- 4 Tap the **Start Presentation** icon in the bottom right of the handheld display to download the presentation slides into Pitch Duo. If prompted to select a Bluetooth device, choose the device name that begins with “Pitch.”



- 5 Once the download is complete, the external projector or monitor will display your first slide and the **Start Presentation** icon will be blacked out.
- 6 To advance through the slides, tap on the next slide in the List View, tap on the down arrow in the lower right hand corner of the device screen, or press the "Move Down" hardware button on the handheld device.
- 7 To return back through the slides, tap on the previous slide in the List View, tap on the up arrow in the lower right hand corner of the screen, or press the "Move Up" hardware button on the Palm-powered device.
- 8 When the presentation is complete, click the blacked-out Start Presentation icon to end the show or the "Exit" button in iPresent to return to the main menu and leave the last slide up on the screen.

On a Palm device, the four icons along the center bottom of the iPresent screen allow you to choose the slide view on the device's screen. On a Pocket PC device, tapping the  icon allows you to toggle between the four different views. You can move between views on your device during the presentation without interrupting the running slide show.

The icons and associated views are:



List View - a list of all slides in the slide show.



Image View - displays an image of each slide.



Text View - displays the text of the current slide.



Notes View - displays notes associated with the current slide.

Loading Presentations to the Handheld Device

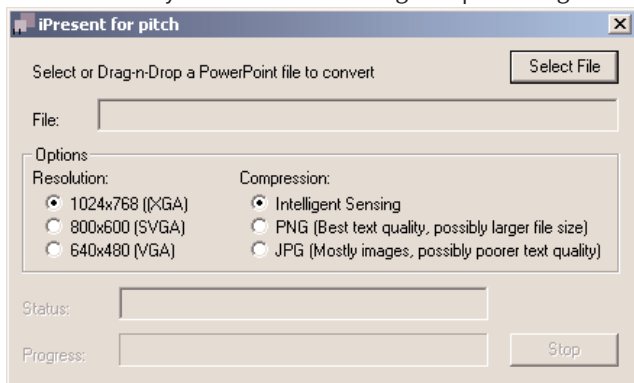
iPresent takes advantage of synchronization technology provided by the handheld device OS, so moving presentations from your desktop computer to your handheld device is as simple as clicking an icon.

To Bring a Presentation to the Handheld:

- 1 Open the iPresent program on your desktop computer.
- 2 Either drag the presentation you wish to add to the iPresent window or click “Select File” to browse for and select the appropriate presentation.

! *You will notice that as you add a file into iPresent, it will automatically be converted into an optimized format for use on the handheld. You may choose to have the file converted to PNG format (for better text quality and possibly larger file size), JPG format (for a mostly images presentation and possibly poorer text quality) or Intelligent Sensing (iPresent will determine the best format on a slide-by-slide basis). This process may take a few minutes, especially if your presentation is large.*

- 3 Now that you have added your presentation, some devices will require you to synchronize your handheld device for the file to be moved to your device for viewing and presenting.



Drag and Drop your presentation into the window above, or click 'Select File' to find the file in an explorer window.

Chapter 4

Important Notes

- 1 The Pitch *Duo* PowerPoint solution does NOT support animation features, embedded audio, embedded MPEG, live motion video, or bullet-building.
- 2 Pitch *Duo* uses a high-performance CPU and graphics system. Due to the high-performance nature of the product, it does create heat and become warm to the touch during extended use. This is normal and should not be a cause for concern.
- 3 Due to the heating of the product, when used as a travel charger with a USB charging cable, the product should be left in the open, such as on a desk, bench or table to allow adequate ventilation. The device should never be left powered-on in a tight enclosed area, such as the carrying case, briefcase or purse.
- 4 Should you not have the software installation CD available and choose to download the software from the web site, please note that the code is downloaded in a compressed ZIP format. UnZIP the product software (ZIP utilities are available from www.pkware.com) prior to attempting installation, extracting files to your preferred installation directory on your PC.
- 5 The Pitch *Duo* & iPresent product/software combination supports all recent releases of PowerPoint and Microsoft Office, including PowerPoint 97, PowerPoint 2000 and PowerPoint XP. It does not support PowerPoint 95 or earlier versions.



Chapter 5

The Options Menu

Displaying the 'Options' menu on the handheld device while using iPresent will reveal additional features including hide/unhide individual slides, reorder/restore order of slides, the ability to Auto-Run a presentation and IR remote mode.

Some features will not work while a slide show is 'active' (being displayed by the Pitch *Duo* unit). If the slide show icon on the lower right-hand side of the screen is blacked out, the slide show is active. Tapping the blackened icon will make the presentation 'inactive'.

Hide/Unhide Slides

To Hide a Slide

- 1 Highlight a slide in the inactive show.
- 2 Display the Options menu either by tapping on "iPresent" on a Palm device in the upper right-hand corner of the device screen and tap 'Hide Slide' or tapping on "Options" on a Pocket PC device in the lower right-hand corner, tap 'Slide' then tap 'Hide Slide'.
- 3 "(H)" will appear next to the slide number to indicate that it is hidden. Hidden slides will be skipped during a presentation, and will not be displayed.

To Un-hide a Slide

Highlight the hidden slide and click 'Unhide' in the Options menu of iPresent. The "(H)" icon will disappear by the slide indicating that it is no longer hidden.

Reorder/Restore Slides

To Reorder a Slide

- 1 Highlight a slide in the inactive show
- 2 Display the Options menu and click 'Reorder Slide'.
- 3 A menu will prompt you for a new number for the slide. Input the new number for the slide. The reordered slide will be inserted in that position.

To Restore order of Slides

To restore the original order of the slides, pull down the options menu and click 'Reorder Slides'. This will restore the presentation to the order in which it was originally copied to the handheld.

IR Mode

To control the slide show remotely from your handheld device:

- 1 Make sure the Pitch *Duo* unit is connected as described in the last section of Chapter 1.
- 2 Download the slide show to the Pitch *Duo* as directed at the beginning of this chapter.
- 3 Once the slide show is downloaded to the Pitch *Duo*, display the Options menu.
- 4 Tap "Start IR Mode." An icon will appear in the lower-right hand corner of the device screen to indicate that IR Mode is active.
- 5 Detach the handheld or smartphone from the USB cable connecting it to the Pitch *Duo*.
- 6 Use your handheld device to advance/return slides in the

regular fashion. Ensure that the infrared port of the device is in line-sight of the Pitch *Duo* unit. Distance for remote operation varies depending on the handheld device, range is from 3-15 feet.

! *If a slide advance/return command is not received by Pitch Duo it can be re-sent by tapping the IR icon at the bottom of the device screen, or by pushing any hardware application button on the device.*

- 7 To end IR Mode, reattach the handheld or smartphone to the USB cable connecting it to the Pitch *Duo*. Display the Options menu and tap “Stop IR Mode”.

Auto-Run Presentation

Auto-Run Presentation allows the user to program a slide show to run through slides sequentially with a pre-programmed delay between slides. To use Auto-Run Presentation:

- 1 Display the ‘Options’ menu in iPresent and click Auto-Run Presentation

! *A slide show must be ‘active’ to use Auto-Run. A slide show is active (loaded) when the slide show icon is blackened.*

- 2 A prompt will allow the user to input the number of seconds between slide advances. Check the box to prompt the show to continuously run. The first slide will be displayed after the final slide when the box is checked.
- 3 If you wish to disconnect the handheld or smartphone during Auto-Run, select the “Run Standalone” check box in the Auto-Run Presentation dialog box then detach the device. Re-attach the device and tap anywhere on the device screen to terminate Auto-Run.
- 4 To turn off the Auto-Run Presentation feature, tap anywhere on the Palm-powered device's screen.

Save and Access Presentations on the SD Card

Palm Users

- 1 Drag and drop or select a .PPT file into the iPresent desktop application on your computer as per Chapter 3.
- 2 Open the handheld Install Tool on the computer.
- 3 Check the “Change Destination” button, highlight the PowerPoint presentation, and use the arrow buttons to move it to the SD card window in the “Change Destination” screen. Click “OK” and close the Install Tool.
- 4 Initiate a synchronization between your handheld. and computer.
- 5 The presentations now on the SD card will appear in the “Available Presentations” window of Pitch *Duo* when you start Pitch *Duo* with the card installed in the handheld.

Pocket PC Users

- 1 Drag and drop or select a .PPT file into the iPresent desktop application on your computer as per Chapter 3.
- 2 When prompted for a location to save, go to the root directory on the Pocket PC device and then select “SD Card.”
- 3 Save to any place you desire on the SD card.
- 4 The presentations now on the SD card will appear in the “Available Presentations” window of Pitch *Duo* when you start Pitch *Duo* and are viewing the root directory with the card installed in the handheld.

Chapter 6

Setting Up Bluetooth Connections

Bluetooth settings vary by device and operating system. Basic instructions for the three supported operating systems are included here, but please reference your handheld or smartphone user guide for detailed information on Bluetooth settings for your device.

Palm Users

- 1 Ensure that Bluetooth is enabled. Open “Preferences” from the main applications screen and select the “Communication” set of preferences, then tap on “Bluetooth.” “Bluetooth” should be set to “On.” Return to the main applications screen.
- 2 Now open either iDisplay , iPresent or Quickpoint. Open the ‘Options’ menu and select “Bluetooth...”. In the “Bluetooth” dialog box the check box next to “Connect with Bluetooth” should be checked.
- 3 When starting the remote display or the presentation the Palm device will first look for available Bluetooth devices and then display a list. Select the device name that begins with “Pitch.” The twelve characters that follow “Pitch” in the device name is the MAC address of the Bluetooth adapter.
- 4 Once you have established this connection your device will typically remember it and automatically initiate the Bluetooth connection with the selected device.

Pocket PC Users

Each Pocket PC device is unique in the way in which the Bluetooth connection is established. Below are step by step instructions for the Compaq iPAQ 3970 and the Siemens Pocket LOOX. If instructions for your device are not listed here please consult your users manual for your device or visit the technical support section of our web site at www.igo.com.

Compaq iPAQ 3970

- From the 'Today' screen tap the Bluetooth icon in the bottom right hand corner of the screen.
- Select 'Turn Radio On' if it is displayed.
- From the 'Today' screen tap the Bluetooth icon in the bottom right hand corner of the screen.
- Select 'Bluetooth Manager'
- Select 'Search'
- Once the search is completed, check the box next to Pitch device in the list of devices. It will be named "Pitch" followed by a space and twelve characters. The twelve characters are the MAC address of the Bluetooth adapter.
- Select 'Save'
- Tap on the 'OK' button
- Tap on 'OK' in the upper right-hand corner
- Tap on the Pitch device icon in the Bluetooth Manager
- Tap 'Actions'
- Tap "Connect to serial port"
- Close Bluetooth Manager
- Open iPresent from the Programs screen
- Tap File, then tap Bluetooth...
- Check the box for 'Connect with Bluetooth'
- Select COM8 from drop-down menu (COM8 = outbound Bluetooth)
- Select 'OK'
- Now start remote display or select the presentation to display.

Siemens Pocket LOOX

- Open Pocket Plugfree from the Programs menu
- Tap Next (Device Name)
- Tap Test
- Select 'Access Serial Ports'
- Tap Next
- Tap Finish
- Tap Yes (to reset device - necessary)
- Open Pocket Plugfree (search) from the Programs menu
- Select Pitch Device
- Select Connect (plug icon)
*note COM Port assignment for later use
- Exit
- Open iPresent from the Programs menu
- Tap on File, then select "Bluetooth..."
- Select 'Connect using Bluetooth'
- Select COM Port from drop-down list (*previously noted)

Nokia Users

When using Quickpoint for Symbian on a Nokia 60 series phone, the Nokia phone automatically locates Bluetooth devices when the user starts the presentation. Simply select the device listing from the found Bluetooth devices that starts with "Pitch" followed by a space and twelve characters. The twelve characters represent the MAC address of the Bluetooth adapter.



FCC Statement

This equipment has been tested and found to comply with the limits for a Class B digital device, pursuant to Part 15 of the FCC rules. These limits are designed to provide reasonable protection against harmful interference in a residential installation. This equipment generates, uses, and can radiate radio frequency energy and, if not installed and used in accordance with the instructions, may cause harmful interference to radio communications. However there is no guarantee that interference will not occur in a particular installation. If this equipment does cause harmful interference to radio or television reception, which can be determined by turning the equipment off and on, the user is encouraged to try to correct the interference by one or more of the following measures:

- Reorient or relocate the receiving antenna
- Increase the separation between the equipment and receiver
- Connect the equipment into an outlet on a circuit different from that to which the receiver is connected
- Consult the dealer or an experienced radio/TV technician for help.

iGo is not responsible for radio/TV interference caused by using unauthorized cables or by making unauthorized changes to this equipment.

VCCI Notice

This is a Class B product, to be used in a domestic environment, based on the Technical Requirement of the Voluntary Control Council for Interference from Information Technology Equipment (VCCI). If this is used near a radio or television receiver in a domestic environment, it may cause radio interference. Please install and use the equipment according to the instruction manual.

この装置は、情報処理装置等電波障害自主規制協議会（VCCI）の基準に基づくクラスA 情報技術装置です。この装置を家庭環境で使用すると電波妨害を引き起こすことがあります。この場合には使用者が適切な対策を講ずるよう要求されることがあります。

Caution

The manufacturer Regulatory Engineering Department must approve changes or modifications not covered in this user guide in writing. Changes or modifications made without written approval may void the user authority to operate this equipment.



Technical Support

If you have a problem, we're here to help. You can receive technical support in a variety of ways:

North America Support

1-800-474-7593

6 a.m. - 5 p.m. PST Monday - Friday

email: techsupport@igo.com

web: <http://www.igo.com/help/customersupport.asp>

European Support

00 800 762 392 77

Country Prefix 0011 - Australia

Country Prefix 001 - Hong Kong and Japan

Country Prefix 00 - France, Germany, Ireland, Norway, Sweden, Switzerland, UK, New Zealand

12 p.m. - 12 a.m. GMT Monday - Friday

email: techsupport@igo.com

web: <http://www.igo.com/help/customersupport.asp>

Mobility Electronics

17800 North Perimeter Drive, Suite 200

Scottsdale, AZ 85255-5449

www.igo.com

www.mobilityelectronics.com

©2002 Mobility Electronics, Inc. The Mobility and Pitch logos are trademarks of Mobility Electronics, Inc. The iGo logo is a trademark of iGo Direct Corporation. iGo Direct Corporation has licensed the use of the iGo logo to Mobility Electronics. All other brand names and logos are trademarks or registered trademarks of their respective owners.

Specifications are subject to change without notice.