

User's Guide

Presentation Solution for Palm Handhelds

Model Number: PS6PM5V

Pitch™ is a complete presentation solution for Palm handhelds that are equipped with the Universal Connector. The solution includes the Pitch™ hardware sled which connects a Palm handheld to display devices such as a monitor or projector, a power supply for powering the Pitch™ sled and charging the Palm's batteries, iPresent software which provides PowerPoint compatibility for the PalmOS, and iDisplay software for displaying screen images from the Palm handheld on external displays.

Table of Contents

Introduction

About iGo Pitch™	1
Minimum Requirements	3
Product Registration	3

Chapter 1

Preparing to Use Pitch™	4
Installation of iDisplay Software	4
Installation of iPresent Software	4
Connecting Pitch™ to a Display.	5

Chapter 2

Using iDisplay Software	6
-----------------------------------	---

Chapter 3

Using iPresent Software	7
Loading Presentations to the Handheld	9
Tips for Viewing PowerPoint Files	10

Chapter 4

Important Notes	11
---------------------------	----

Chapter 5

Using the Options Menu.	12
Hide/Unhide Slides.	12
Reorder/Restore Slides.	12
Autorun Slideshow.	13
Presentations on the SD Card	13

Technical Support	15
------------------------------------	-----------



Minimum Requirements

The following minimum requirements must be met for the network, Handheld, and desktop computer:

- A Palm handheld equipped with the Universal Connector and running Palm Operating System 4.0 and higher.

! *At the time of release of this document the Palm devices equipped with the Universal Connector are the m125, m130, m500, m505, m515 and i705.*

- The AC power adapter for Pitch™
- The Pitch™ sled
- CDROM with iDisplay and iPresent
- An external display device such as a monitor or project that supports VGA connectivity

Please Register Now

Thank you for purchasing the iGo **Pitch** for Palm. We strongly encourage you to register this product so that we may keep you notified of pertinent updates and relevant product information. Free technical support is provided to registered users for the first 90 (ninety) days from purchase date.

Registration may be completed online at: **www.igo.com/registration**.



Chapter 1

Preparing to Use Pitch™

Installing iDisplay Software

iDisplay can be installed from the applications CD or downloaded from the Pitch™ website at www.igo.com/techsupport.


! *iDisplay will be auto-installed when setup.exe is run.*

Install iDisplay as noted below:

- 1 Either download the software from the site above or insert the applications CD to your desktop PC.
- 2 Double-click on the iDisplay.prc file. This will automatically launch the Palm Install Tool and add iDisplay to the list of files to be installed on the handheld.
- 3 Verify that the User listed in the Install Tool is the same as the User on the handheld on which you are installing the software.
- 4 Click on the "Done" button to indicate you have completed the necessary setup with the Install Tool.
- 5 Insert the Palm handheld into its cradle and press the HotSync button to finish installation.

Installing iPresent Software

- 1 Insert the application CD into your PC's CDROM drive or download the iPresent program from the Pitch website at www.igo.com/techsupport.
- 2 Run the installer by double clicking on the file setup.exe if it does not launch automatically.
- 3 The installer will guide you through the installation process. When complete, the PC will have iPresent loaded; it will be identified in your



Start>Programs>Pitch Menu as "iPresent". The **SETUP** program also automatically loads the Palm iPresent client into your HotSync directory, to be synchronized at the next HotSync operation.

Connecting Pitch™ to a Display

At the venue for your presentation, do the following:

- 1 Attach the iGo Pitch™ unit to the rear of your Palm handheld. Use the thumb buttons on the Pitch™ Unit to lock it into place on the connector. It should rigidly attach once it is locked into position.
- 2 Connect the power adapter to the AC mains and to the power jack on the top of the Pitch™ unit.
- 3 Connect your LCD projector, display unit, monitor or plasma screen via an sVGA cable connector to the connector on the top of the Pitch™ unit.
- 4 Turn on the monitor, projector, or display unit.
- 5 Turn on the Palm handheld and from the **Main/Home** Menu; select the icon labeled "Pitch" or "iDisplay".

Chapter 2

Using iDisplay

The iDisplay software allows the user to display the handheld's screen image to the external display. Follow the steps below to use iDisplay:

- Make sure the Pitch™ unit is connected as described in the previous section.
- From the main menu on the Palm, click on the **iDisplay** icon.
- Select "Refresh" if the Pitch sled has not been recognized by the handheld.



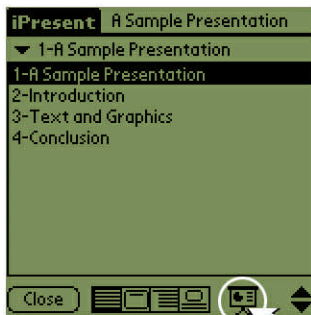
- Once iDisplay is loaded, click on the "Start" button.
- Use the Palm handheld as desired. The current screen image from the Palm handheld will automatically be routed to the external display.

Chapter 3

Using iPresent


The iPresent software allows the user to display PowerPoint presentations from the Palm handheld to an external display.

- Once Pitch is connected to a display (Chapter 1), turn on the Palm and select the icon labeled "Pitch". This will open the iPresent main menu. The menu will display a list of all loaded PowerPoint presentations. Double-tap on the presentation you wish to show and tap the **Start Presentation** icon (it is in the bottom right of the Palm display) to launch the download of the slides into Pitch. Once complete, the external projector or monitor will display your first slide and the **Start Presentation** icon will be blacked out.



(Click this icon to start your presentation)

- To advance forward through the slides, press the "Move Down" button on the Palm handheld. This is the lower of the two thumb-buttons on the case of the handheld.
- To step back slide-by-slide, press the "Move Up" button on the Palm handheld.

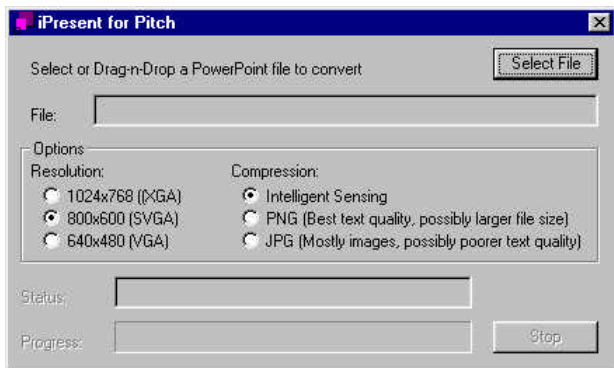
- 
- When done, click the "Close" button in iPresent to return to the main menu and complete the show.
 - There are four icons along the center bottom of the iPresent screen. These icons allow you to choose the view on the handheld's screen. The first box is for list view. The second box is for displaying an image of each slide. The third box is for text view (any text that has been entered on the slide). The fourth box is for notes view (any notes that have been entered in the notes section of the PowerPoint slide).

Loading Presentations to the Handheld

iPresent takes advantage of HotSync® technology by Palm Inc., so moving presentations from your desktop computer to your handheld is as simple as clicking an icon.

To Bring a Presentation to the Handheld:

- 1 Run the iPresent program on your desktop computer.
 - 2 Either drag the presentation you wish to add to the iPresent window or click "Select File" to browse for and select the appropriate presentation.
- ! You will notice that as you add a file into iPresent, it will automatically be converted into an optimized format for use on the handheld. You may choose to have the file converted to PNG format (for better text quality and possibly larger file size), JPG format (for a mostly images presentation and possibly poorer text quality) or Intelligent Sensing (iPresent will determine the best format on a slide-by-slide basis). This process may take a few minutes, especially if your presentation is large.
- 3 Now that you have added your presentation, press the **HotSync** button and the file will be moved to your handheld device for viewing and editing.



(Drag and Drop your presentation into the window above, or click 'Select File' to find the file in an explorer window.)



Tips for Viewing PowerPoint Files

Some useful tips for viewing PowerPoint files are listed below:

Navigation

- Tap on the down arrow at the upper left corner of the screen to navigate to a different slide.
- Use the up and down hardware buttons to scroll up or down one screen at a time.
- Use the up and down arrows at the lower right corner of the screen to scroll up or down one screen at a time.

Views

- Use the tool bar at the bottom center of the iPresent screen to select between four different view options: **List View**, **Slide View**, **Text View** or **Notes View**.
- Select **List View** to see each slide in outline form.
- Select **Slide View** to view each slide as it would appear during the presentation.
- If notes have been added to a desktop PowerPoint file, selecting **Notes View** will allow you to view the notes for each slide.



Chapter 4

Important Notes

- 1 The Pitch™ PowerPoint solution does NOT support animation features, embedded audio, embedded MPEG, live motion video, or bullet-building.
- 2 The Pitch™ PowerPoint solution uses a high-performance CPU and graphics system. Due to the high-performance nature of the product, it does create heat and become warm to the touch during extended use. This is normal and should not be a cause for concern.
- 3 Due to the heating of the product, when used as a travel charger, the product should be left in the open, such as on a desk, bench or table to allow adequate ventilation. The device should never be left powered-on in a tight enclosed area, such as the carrying case, briefcase or purse.
- 4 Should you not have the software Installation CD available and choose to download the software from the FTP site, please note that the code is downloaded in a compressed ZIP format. UnZIP the product software (ZIP utilities are available from www.pkware.com) prior to attempting installation, extracting files to your preferred installation directory on your PC.
- 5 The Pitch™ & iPresent product/software combination supports all recent releases of PowerPoint and Microsoft Office, including PowerPoint 97, PowerPoint 2000 and PowerPoint XP. It does not support PowerPoint 95 or earlier versions.

Chapter 5

The Options Menu

Pulling the 'Options' menu down on the Palm handheld while using iPresent will reveal additional features including hide/unhide individual slides, Reorder/restore order of slides, and the ability to Auto run a slideshow.

Hide/Unhide Slides

This feature will not work while a slideshow is 'active' (being displayed by the Pitch unit). If the slideshow icon on the lower right hand side of the Palm unit is blacked out, the slideshow is active. Tapping the blackened icon will make the presentation 'inactive'. To use this feature:

- 1 Highlight a slide in the show
- 2 Pull down the options menu and click 'Hide Slide'
- 3 "(H)" will appear next to the slide number to indicate that it is hidden. Hidden slides will be skipped during a presentation, and will not be displayed.

To Un-hide a Slide

Highlight the hidden slide and click 'Unhide' in the options menu of iPresent. The "(H)" icon will disappear by the slide indicating that it is no longer hidden.

Reorder/Restore Slides

This feature will not work while a slideshow is 'active' (being displayed by the Pitch unit). If the slideshow icon on the lower right hand side of the Palm unit is blacked out, the slideshow is active. Tapping the blackened icon will make the presentation 'inactive'. To use this feature:

- 1 Highlight a slide in the show
- 2 Pull down the options menu and click 'Reorder Slide'

- 3 A menu will prompt you for a new number for the slide. Input the new number for the slide. The reordered slide will be inserted after the slide currently in that position.

To Restore order of Slides

To restore the original order of the slides, pull down the options menu and click 'Reorder Slides'. This will restore the presentation to the order in which it was originally copied to the handheld.


Autorun Feature

Autorun allows the user to program a slideshow to run through slides sequentially with a pre-programmed delay between slides. To use Autorun:

- 1 Pull down the options menu in iPresent and click **Autorun**
! *A slideshow must be 'active' to use Autorun. A slideshow is active (loaded) when the slideshow icon is blackened.*
- 2 A prompt will allow the user to input the number of seconds between slide advances. Check the box to prompt the show to continuously run. The first slide will be displayed after the final slide when the box is checked.
- 3 To turn off the Auto-Run feature, tap anywhere on the handheld's screen.

Save and Access Presentations on the SD Card

- 1 Drag and drop or select a PPT file into the iDisplay application on your PC as per Chapter 3.
- 2 Open the Install Tool from your HotSync Manager on the PC.
- 3 Check the "Change Destination" button, highlight the PowerPoint presentation, and use the arrow buttons to move it to the SD card window in the "Change Destination" screen. Click "OK" and close the Install Tool.

- 
- 4 HotSync to your handheld.
 - 5 The presentations hotsynced to the SD card will appear in the "Available Presentations" window of Pitch™ when you start Pitch™ with the card installed in the handheld.



Technical Support

If you have a problem, we're here to help. You can receive technical support in a variety of ways:

North America Support

Technical Support: 1-800-474-7593

E-mail : Support@igo.com

(E-mail messages will be responded to within one business day)

Web: <http://www.igo.com/help/techsupport.asp>

8:00 AM - 8:00 PM EST, 7 days a week

European Support

French Support: (33) 1 64 53 91 47

German Support: (49) 211 6579 1147

English Support: (44) 207 744 0371

E-mail: Support-Europe@igo.com

(E-mail messages will be responded to within one business day)

Web: <http://www.igo.com/help/techsupport.asp>

9:00 AM - 9:00 PM GMT Monday through Friday

10:00 AM - 4:00 PM GMT Saturday and Sunday (except on bank holidays)

Mobility Electronics

7955 East Redfield Road

Scottsdale, AZ 85259

www.mobilityelectronics.com

www.igo.com

©2002 Mobility Electronics, Inc. The iGo and Pitch for Palm logos are trademarks of Mobility Electronics, Inc. All other brand names and logos are trademarks or registered trademarks of their respective owners.

Specifications are subject to change without notice.