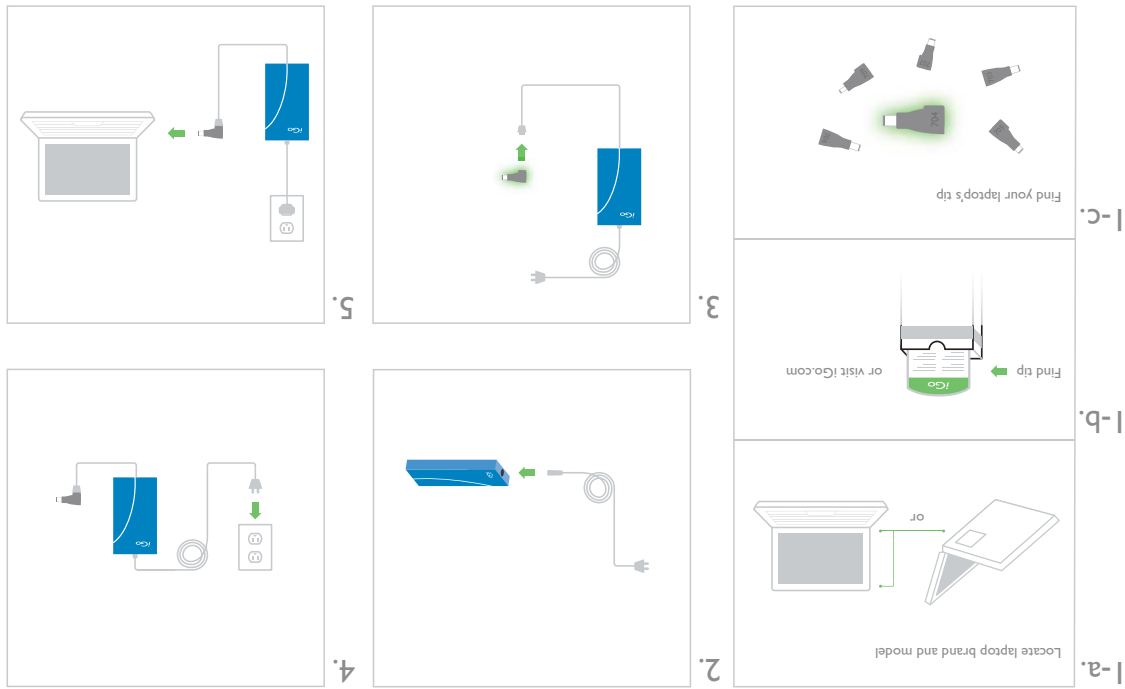


## Laptop Charging



### Troubleshooting

Before contacting customer support, here are some common resolutions to problems:

- Do you have the right tip for your device? Check [iGo.com](http://iGo.com) for the latest compatibility.
- Check to ensure connection to power source is secure and that there is power at the source.
- Check the connections to the device and tip to ensure they have not come loose.
- Ensure you have the correct tip and all connections are secure, then unplug unit from power source, wait 5 seconds, then plug back in.

### Product Support

We are committed to providing our customers with first-class customer service and product support. For assistance, email iGo Product Support at [support@igo.com](mailto:support@igo.com).

### Warranty

We warrant all iGo branded products against defects in material and workmanship for two (2) years from the original date of purchase. Please see enclosed Safety and Warranty information sheet for details.

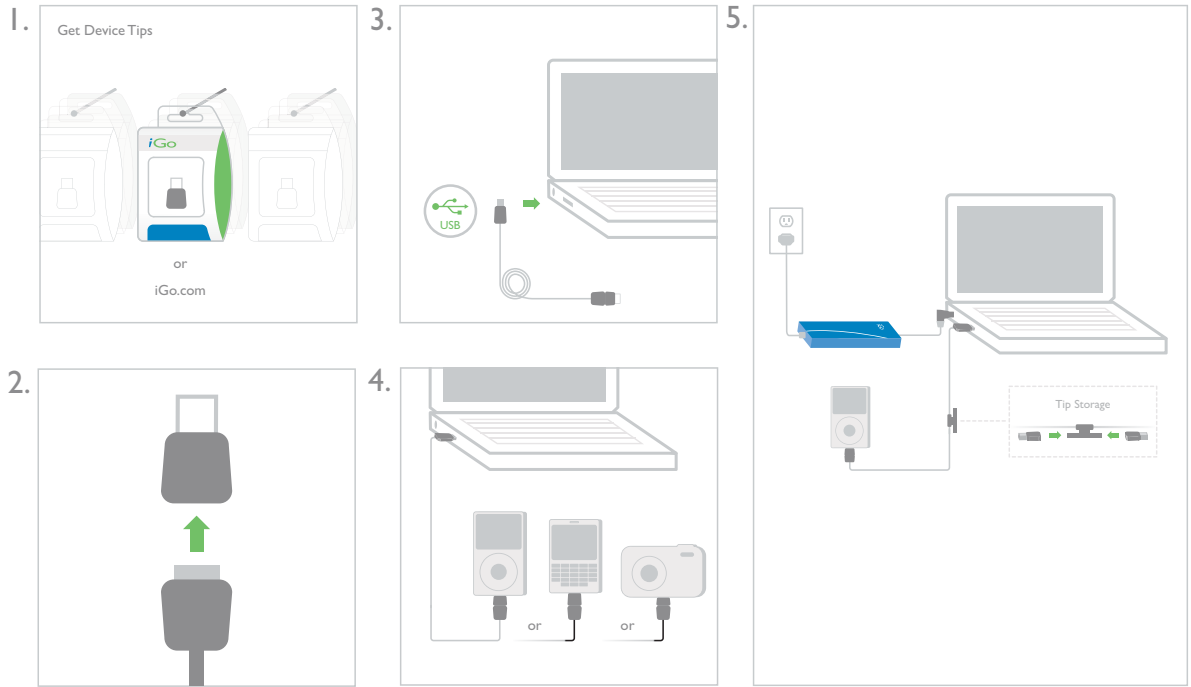
### Product Registration

Receive one additional year of warranty coverage plus special member-only offers when you register your product at [www.iGo.com/register](http://www.iGo.com/register). Registration helps us serve you better; failure to register does not diminish your warranty rights.

**iGo**<sup>®</sup>  
Getting Started

- Charging your laptop
- Charging your other devices

## Device Charging



### Important Notices

Please read the following closely before using this iGo product. Some low-power USB ports may not provide enough power to charge your device. If the device does not charge correctly, use a higher-power port (some USB ports put out more power than others). You may be able to locate this information in your computer's user manual. The USB charging cable is designed to power and charge all your gadgets and cannot be used for synchronization of data.

### Contents

- Laptop charger
- Laptop tips
- Wall cable
- USB charging cable
- Travel case

### Dimensions

147 x 71.4 x 16.5 mm  
USB Charging Cable: 15" (381 mm)  
Wall Cable: 6' (1,828.80 mm)

### Specifications

Input 100-240 VAC;  
50/60 Hz  
Output: 90W

### Operating conditions

Operating Temperature  
0°C to 40°C / 32°F – 104°F

### Be Powerful. Eliminate Waste.

Using one iGo charger with power tips instead of multiple chargers saves you money and produces less waste.

### Save Energy.

Look for new products with iGo Green Technology. These products automatically reduce standby power by up to 85%, conserving resources and saving money.



Visit [iGoGreen.com](http://iGoGreen.com)  
for more information