

FCC Compliance

This equipment has been tested and found to comply with the limits for a Class B digital device, pursuant to Part 15 of the FCC Rules. These limits are designed to provide reasonable protection against harmful interference in a residential installation. This equipment generates uses and can radiate radio frequency energy and, if not installed and used in accordance with the instructions, may cause harmful interference to radio communications. However, there is no guarantee that interference will not occur in a particular installation. If this equipment does cause harmful interference to radio or television reception, which can be determined by turning the equipment off and on, the user is encouraged to try to correct the interference by one or more of the following measures:

- Reorient or relocate the receiving antenna.
- Increase the separation between the equipment and receiver.
- Connect the equipment into an outlet on a circuit different from that to which the receiver is connected.
- Consult the dealer or an experienced radio/TV technician for help.

Changes or modifications not expressly approved by the party responsible for compliance could void the user's authority to operate the equipment.

Canada Compliance

This Class B digital apparatus complies with Canadian ICES-003.

Cet appareil numérisé de la classe B est conforme à la norme NMB-003 du Canada

www.iGo.com

© 2007 Mobility Electronics, Inc. Mobility Electronics iGo is a registered trademark of Mobility Electronics, Inc. All other brand names and logos are trademarks of their respective owners. Specifications are subject to change without notice. Protected under one or more of the following patents: 5,347,211; 6,064,177; 6,643,158; 6,650,560; 6,700,808; 6,751,109; 6,775,163; 6,791,853; 6,920,056; 6,937,490 and 6,976,885. Other United States and foreign patents pending. Made in China. P/N 8040405-01 Rev A.

iGo[®] everywhere



For use with:



User Guide

Congratulations on your iGo[®] power purchase! Compatible with most of today's popular gadgets, this iGo everywhere power solution allows you to power and charge from any standard wall or in-vehicle outlet. Lose the clutter of all those individual chargers and power your mobile phone, Bluetooth[®] headset, smartphone/PDA, MP3 player, portable gaming device, digital camera, GPS device and more from this single, convenient power solution.

Specifications

Wall (AC) Unit

Input Voltage: 100-240 VAC
Dimensions: 3.25 x 2.00 x 1.00"
(82.55 x 50.80 x 25.40mm)

Auto (DC) Unit

Input Voltage: 11.0-16.5 VDC
Dimensions: 3.63 x 1.00 x 1.00"
(92.20 x 25.40 x 25.40mm)

Retractable Cord

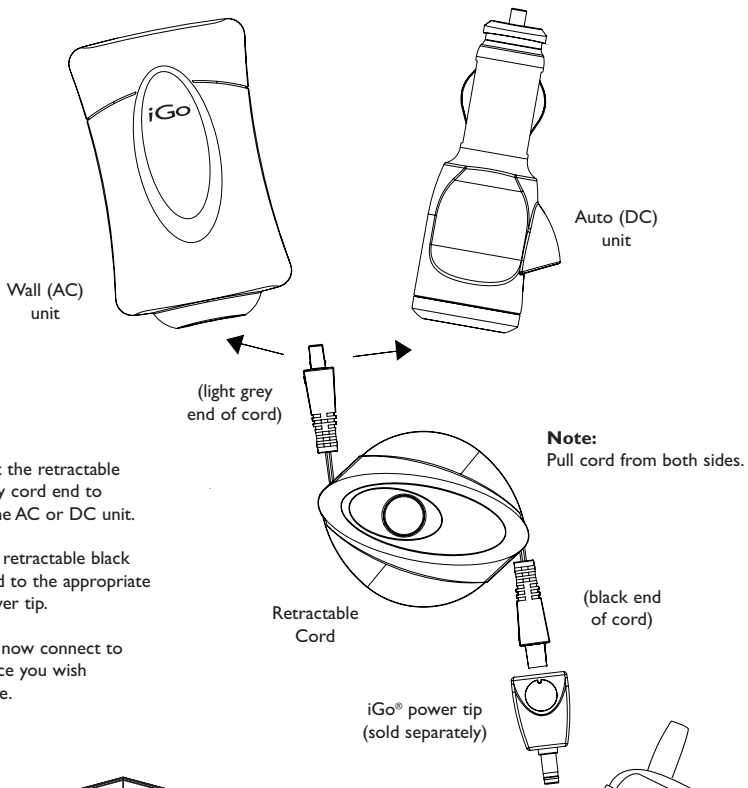
Case Dimensions: 2.17 x 2.60 x 0.93"
(55.10 x 66.04 x 23.62mm)
Cord Length: 5.0' (1.52m)

Safety Features

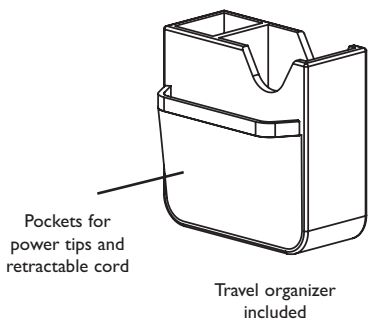
Current limit
Short circuit protection

Package Contents

- Wall (AC) unit
- Auto (DC) unit
- Retractable cord
- Travel organizer



1. Connect the retractable light grey cord end to either the AC or DC unit.
2. Plug the retractable black cord end to the appropriate iGo power tip.
3. You can now connect to the device you wish to charge.



CAUTION: Hold one end of the cable while retracting. Do not let cord retract freely. Cord may jam on reel or whip back and forth and cause injury.